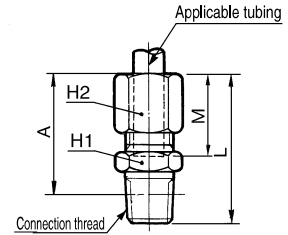


## Male Connector: H



Applicable tubing O.D. (mm)	Connection threads R	Model	H1 (width across flats)	H2 (width across flats)	L	M	A*	Effective area (mm <sup>2</sup> )	Weight (g)
4	1/8	H04-01	10	10	24.2	15	21.1	4	10
	1/4	H04-02	14		28.6		23.1		17
6	1/8	H06-01	10	12	24.2	16	21.1	11	12
	1/4	H06-02	14		28.6		23.1		19
	3/8	H06-03	17		30		24.8		31
8	1/8	H08-01	12	14	24.2	16	21.1	20	16
	1/4	H08-02	14		28.6		23.1		21
	3/8	H08-03	17		30		24.8		30
10	1/4	H10-02	14	17	28.6	17	23.1	34	28
	3/8	H10-03	17		30		24.8		37
	1/2	H10-04	22		33.2		25.9		53
12	1/4	H12-02	17	19	29.6	17	24.1	51	30
	3/8	H12-03	17		30		24.8		39
	1/2	H12-04	22		33.2		25.9		59

\* Reference dimensions after R thread installation.

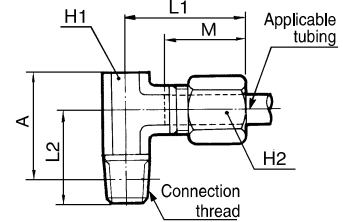


## Male Elbow: DL



Applicable tubing O.D. (mm)	Connection threads R	Model	H1 (width across flats)	H2 (width across flats)	L1	L2	M	A*	Effective area (mm <sup>2</sup> )	Weight (g)
4	1/8	DL04-01	10	10	23.5	17	15	19.6	3.5	23
	1/4	DL04-02				19				30
6	1/8	DL06-01	10	12	23.5	17	16	19.6	9	25
	1/4	DL06-02				19				31
	3/8	DL06-03				22				53
8	1/8	DL08-01	12	14	24.5	18	16	21.6	19	32
	1/4	DL08-02				21				38
	3/8	DL08-03				22				54
10	1/4	DL10-02	14	17	26.5	23	17	25.8	31	51
	3/8	DL10-03				22				57
	1/2	DL10-04				27				100
12	1/4	DL12-02	17	19	28.5	25	17	29.6	43	76
	3/8	DL12-03				26				85
	1/2	DL12-04				27				91

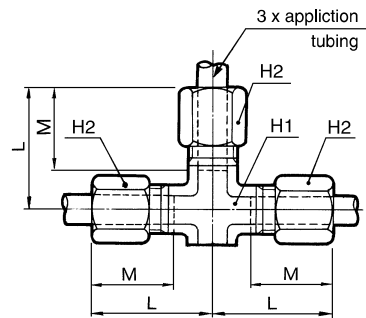
\* Reference dimensions after R thread installation.



## Union Tee: DT



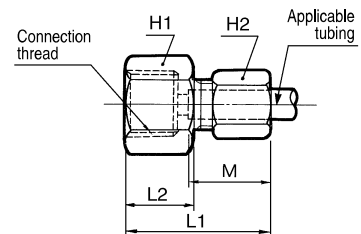
Applicable tubing O.D. (mm)	Model	H1 (width across flats)	H2 (width across flats)	L	M	Effective area (mm <sup>2</sup> )	Weight (g)
4	DT04-00	10	10	23.5	15	5.7	32
6	DT06-00	10	12	23.5	16	14	36
8	DT08-00	12	14	24.5	16	25	47
10	DT10-00	14	17	26.5	17	49	70
12	DT12-00	17	19	28.5	17	55	70



## Female Connector: DHF



Applicable tubing O.D. (mm)	Connection threads Rc	Model	H1 (width across flats)	H2 (width across flats)	L1	L2	M	Effective area (mm <sup>2</sup> )	Weight (g)
4	1/4	DHF04-02	17	10	30.3	16	15	4	27
6	1/4	DHF06-02	17	12	30.8	16.5	16	11	28
	3/8	DHF06-03	19		32.8	18.5			31
8	1/4	DHF08-02	17	14	29.8	15.5	16	20	30
10	1/4	DHF10-02	17	17	30.8	16.5	17	34	37
12	1/4	DHF12-02	17	19	30.8	16.5	17	51	40



KQ2

KQB2

KS  
KX

KM

KF

M

H/DL  
L/L

KC

KK

KK130

DM

KDM

KB

KR

KA

KQG2

KG

KFG2

MS

KKA

KP

LQ

MQR

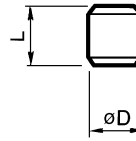
T

IDK

## Plug: DP



Applicable fitting (mm)	Model	L	øD	Weight (g)
4	DP-04	8	5.6	0.2
6	DP-06		7.6	0.5
8	DP-08		9.6	0.8
10	DP-10		11.6	1.2
12	DP-12		13.6	1.6

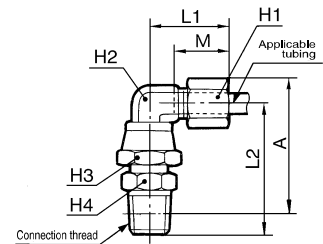


## Swivel Elbow: L



Applicable tubing O.D. (mm)	Connection thread R	Model	H1 (width across flats)	H2 (width across flats)	H3 (width across flats)	H4 (width across flats)	L1	L2	M	A*	Effective area (mm <sup>2</sup> )	Weight (g)
4	1/8	L04-01	10	10	14	10	21.8	30	15	32.7	3.5	33
	1/4	L04-02				14		34.4		34.7		40
6	1/8	L06-01	12	10	14	10		30		33.8		36
	1/4	L06-02				14	21.8	34.4	16	35.8	9	43
	3/8	L06-03				17		35.8		37.5		55
8	1/8	L08-01	14	12	17	12		31		36		46
	1/4	L08-02				14	23.3	35.4	16	38	19	52
	3/8	L08-03				17		36.8		39.7		61
10	1/4	L10-02	17	14	19	14		36.4		40.7		68
	3/8	L10-03				17	23.3	37.8	17	42.4	31	76
	1/2	L10-04				22		41		43.5		96
12	1/4	L12-02	19	17	22	17		39.4		44.9		86
	3/8	L12-03				17	24.3	39.8	17	45.6	43	94
	1/2	L12-04				22		43		46.7		118

\* Reference dimensions after R thread installation.

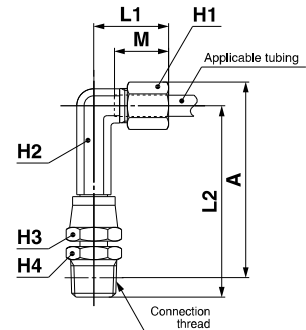


## Swivel Extended Elbow: LL



Applicable tubing O.D. (mm)	Connection thread R	Model	H1 (width across flats)	H2 (width across flats)	H3 (width across flats)	H4 (width across flats)	L1	L2	M	A*	Effective area (mm <sup>2</sup> )	Weight (g)
4	1/8	LL04-01	10	10	14	10	21.8	50	15	52.7	3.5	45
	1/4	LL04-02				14		54.4		54.7		53
6	1/8	LL06-01	12	10	14	10		51		54.8		47
	1/4	LL06-02				14	21.8	55.4	16	56.8	9	44
	3/8	LL06-03				17		56.8		58.5		66
8	1/8	LL08-01	14	12	17	12		52		57		63
	1/4	LL08-02				14	23.3	56.4	16	59	19	68
	3/8	LL08-03				17		57.8		60.7		77
10	1/4	LL10-02	17	14	19	14		58.4		62.7		89
	3/8	LL10-03				17	23.3	59.8	17	64.4	31	98
	1/2	LL10-04				22		63		65.5		117
12	1/4	LL12-02	19	17	22	17		62.4		67.8		121
	3/8	LL12-03				17	24.3	62.8	17	68.5	43	129
	1/2	LL12-04				22		66		69.7		153

\* Reference dimensions after R thread installation.



KQ2

KQB2

KS  
KX

KM

KF

M

H/DL  
L/LL

KC

KK

KK130

DM

KDM

KB

KR

KA

KQG2

KG

KFG2

MS

KKA

KP

LQ

MQR

T

IDK